

Value Statement

IRAdirect express enhances the Ascensus Fully- and Self-Administered IRAdirect® platform by giving frontline employees the ability to perform routine IRA transactions easily with a minimal amount of training. IRAdirect express brings valuable benefits to both credit unions and their members through an easy-to-use interface using Harland Financial Solutions' OpenPath™ Application-Exchange technology to connect UltraData® Enterprise and Ascensus' IRAdirect. Users will experience increased IRA processing accuracy while reducing their risk of non-compliance with IRS regulations. IRA owners will benefit from a more efficient and higher quality level of service.

Description

IRAdirect express is easy to use and simplifies IRA training. It will assist you in making your IRA transactions more comfortable for all staff, even those new to IRA processing. Credit union employees will grow more confident in their abilities to easily manage routine IRA transactions, allowing them to focus more on member needs instead of completing the IRA transaction process. This results in credit union employees building stronger member relationships and thereby enhancing the overall credit union image.

Major Product Benefits

- **Process Member Transactions Faster** – IRAdirect express simplifies employee training, speeds up the new account process, and reduces the member's wait time.
- **Mitigate Risk** – Quality control edits are in place to minimize the likelihood of common user errors and eliminate the need for costly back-office audit processes.
- **Standardize the Process Across the Credit Union** – Tellers, member service representatives, or any other customer-facing employees who work with IRAs can use IRAdirect express. A common process shared by all staff simplifies training and reduces confusion.
- **Minimize Fear of Working with IRAs** – Because IRAdirect express simplifies the process of handling IRA transactions, staff confidence will increase and members will be more likely to have a positive impression of your credit union.

Functional Features

- **Data Entry** – Provides an easy, Internet-based, user-friendly interface to enter owner IRA transactional data in one location.
- **Manages IRA Data Entry Processes** – Supports IRA processes for account owner applications, contributions, and distributions (withdrawals).
- **Printing Forms** – Provides flexibility in creating, viewing, and printing partial or completed forms for Traditional IRAs, Roth IRAs, and Coverdell ESAs. Also provides easy access to the other forms, disclosures, and check processing associated with IRA transactions.

This product is designed for use by frontline staff and is not meant to replace IRAdirect. Some transactions, such as those involving periodic payments and death claim processing, are only supported within IRAdirect.

Planning/Implementation and General Responsibilities Overview

Harland Financial Solutions – Installs, trains, and supports the OpenPath Employee-Exchange and Application-Exchange solutions that interface with IRAdirect express and provides assistance with questions related to transaction and account processing within UltraData Enterprise.

Ascensus – Installs, trains, and supports the IRAdirect express interface and provides assistance with questions related to required fields or mapping to UltraData Enterprise.

Product Requirements

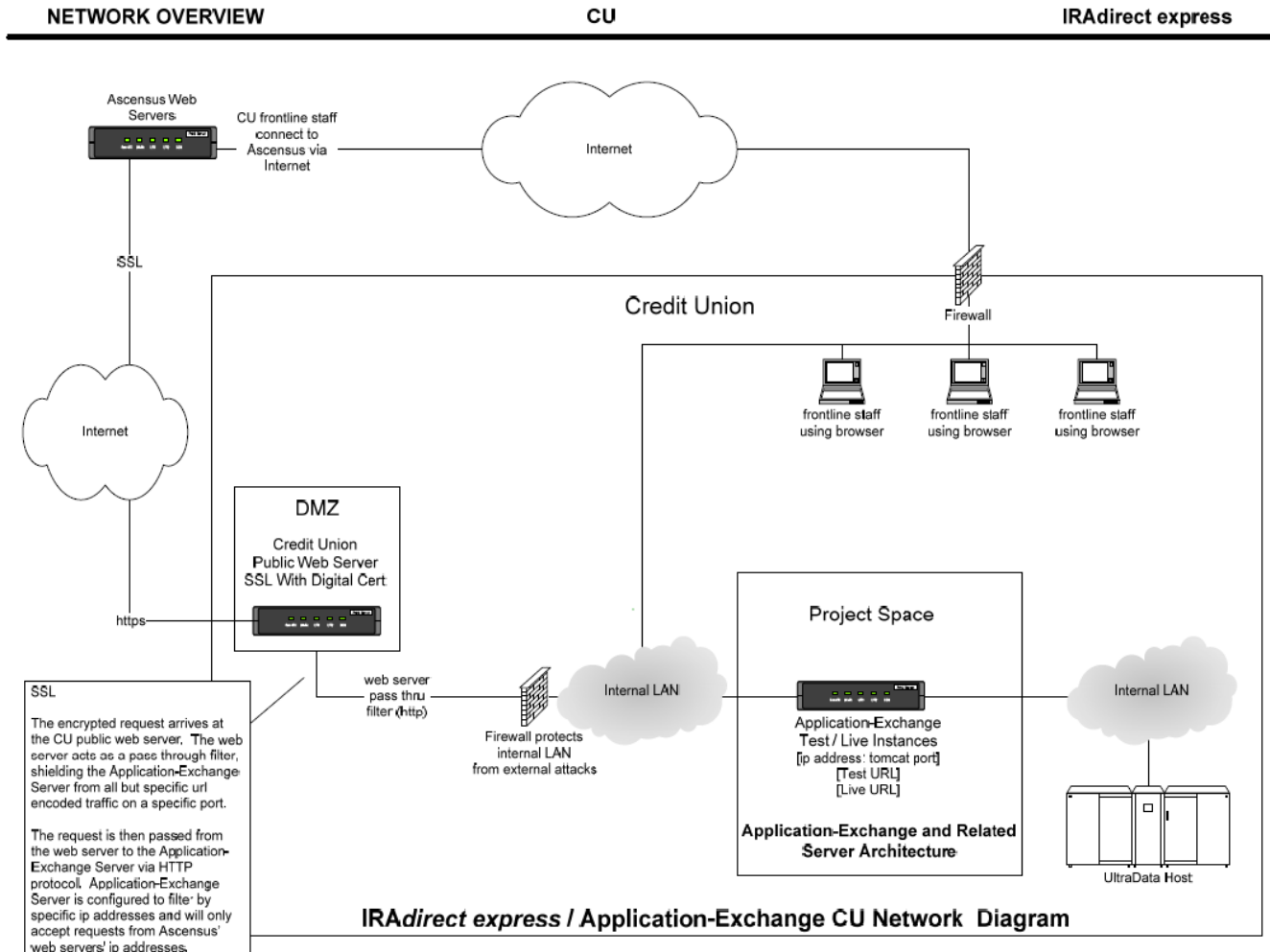
Harland Financial Solutions Software

- UltraData Enterprise
- OpenPath Application-Exchange
- OpenPath Employee-Exchange

Ascensus IRAdirect express Requirements

- Enrollment in either the *Fully-* or *Self-Administered* IRA program
- Online processing with IRAdirect
- Microsoft operating system: Windows® XP or above
- Broadband Internet Connection
- Microsoft Internet Explorer 6.0 or above with 128-bit encryption
- Adobe Acrobat® Reader (9.0 or above recommended)
- Ability to print from the operating systems and programs listed above

Basic Architecture



Pricing Information

Ascensus

- **IRAdirect express Enrollment Fee - \$100.** This fee is charged for establishing the connection between your data processor and IRAdirect.
- **IRAdirect express Account Fee - \$1.00 annually per IRA.** This fee is charged for servicing and maintaining accounts using IRAdirect express. The minimum fee is \$250 and the maximum fee is \$5,000.
- **IRAdirect express Data Processor Fee - \$1.00 annually per IRA.** This fee is charged for servicing and maintaining the connection between your data processor (DP) and IRAdirect. The minimum fee is \$250.

Harland Financial Solutions

- Please contact your Harland Financial Solutions Client Manager for additional information and a quote.

Enrollment Information

Enrollment in IRAdirect express is an easy process.

1. The credit union should first contact their Harland Financial Solutions Client Manager who will assist with initiating any necessary Harland Financial Solutions product implementation.
2. The next step is enrolling with Ascensus. Complete the IRAdirect express enrollment online by following the steps below.
 - Go to www.simplerira.com and click the **IRAdirect express** link.
 - Click the **IRAdirect express Enrollment** link.
 - Enter your organization name, your name, email address, and CUID or ORG number. Select the **View Enrollment Contracts** radio button.
 - From the enrollment contracts list, select IRAdirect express. Click the **View Document** button.
 - In the pop-up box, enter the user name **cuira328** and the password **enroll**, and then click the **OK** button.
 - Follow the easy-to-use instructions to complete the enrollment form.

When you have completed and submitted the enrollment form, we will contact you to begin the product implementation process.